



BEE OVERSEAS
MOVE WITH PRIDE



ZF



www.beeoverseas.com

1



DRIVE SHAFT 19T/19T
PART No: 1250 302 196

2



DRIVE SHAFT 25T/19T
PART No: 1268 302 104

3



DRIVE SHAFT 25T/19T
(SPLINE LENGTH LESS)
PART No: 1268 302 001

4



DRIVE SHAFT 33T
PART No: 1272 298 918,
1272 302 112

5



DRIVE SHAFT 34T
PART No. 1269 298 942

6



DRIVE SHAFT 29T/19T
PART No. 1268 302 042

7



GEAR 5TH SPEED 24T/19T
PART No. 1250 304 210

8



SLIDING SLEEVE 22T
PART No. 1250 304 233

9



SYNCHRONIZER CONE 63T/27T
PART No. 1250 304 350

10



SLIDING SLEEVE (FORK DIA GRIND) 27T
PART No. 1250 304 236

11



SLIDING SLEEVE (FORK DIA PLAIN) 27T
PART No. 1250 304 004

12



SLIDING SLEEVE 19T
PART No. 1250 304 362

13



SLIDING SLEEVE 19T (BLOCK DIA DIFF)
Part No : 1250 304 141

14



SLIDING HUB 19T
PART No: 1250 304 185

15



SYNCHRONIZER HUB 22T
PART No: 1250 304 234

16



SYNCHRONIZER HUB 27T
PART NO: 1250 304 235

17



SYNCHRONIZER CONE 19T/51-T
PART NO: 1250 304 292

18



GEAR 2ND SPEED 36T
PART No: 1250 304 029

19



GEAR CONSTANT 41-T
PART No: 1250 304 234

20



GEAR 4TH SPEED 26T
PART No: 1250 304 217

21



GEAR CONSTANT 36T
PART No: 1250 303 074

22



SYNCHRONIZER CONE 22T/51T
PART NO : 1250 304 292

23



GEAR 4TH SPEED 30T/22T
PART No: 1268 304 010

24



GEAR 5TH SPEED 24T/19T
PART NO: 1268 304 005

25



GEAR 4TH SPEED 29T/22T
PART NO: 1268 304 004

26



GEAR CONSTANT 48T
PAR NO: 1268 303 057

27



GEAR 1ST SPEED 51/27T
PAR NO: 1268 304 256

28



GEAR 3RD SPEED 32T
PART NO: 1250 304 179

29



GEAR 2ND SPEED 36T/27T
PART NO : 1250 304 029

30



REVERSE GEAR 21T
PART NO : 1250 305 033

31



GEAR 4TH SPEED 26T
PART NO: 1250 304 217

32



5TH SPEED GEAR 34T
PART NO: 1268 303 004

33



DOUBLE GEAR 23/28T
PART NO: 1268 303 005

34



SYNCHRONIZER HUB 5TH & 6TH
SPEED
PART NO: 1272 304 078

35



GEAR 3RD SPEED 32T
PART NO: 1250 304 179

36



GEAR 2ND SPEED 42T
PART NO: 1268 304 204

37



SYNCHRONIZER CONE (3MM GROOVE)
18/51T
PART NO: 1269 304 137

38



SYNCHRONIZER CONE 18/51T
PART NO: 1269 304 196

39



SLIDING SLEEVE 51T (WITH COLLAR)
PART NO: 1240 304 375

40



SLIDING SLEEVE 51T
PART NO: 1272 304 077

41



SYNCHRONIZER CONE 63T
PART NO: 1269 333 048

42



GEAR 3RD SPEED 34T
O.E. Ref No. 1268 304 009

43



GEAR 5TH SPEED 29T
PART NO: 1268 304 015

44



INPUT SHAFT 19T/25T
PART NO: 1268 312 005

45



INTERMEDIATE SHAFT 30T
PART NO: 1285 312 011/ 1285 212 005

46



SLIDING SLEEVE 51T
PART NO: 1285 333 020

47



SYNCHRONIZER HUB 4TH & 5TH SPEED
PAR NO: 1269 304 128

48



GEAR CONSTANT 59T
PART NO: 1268 303 012

49



SLIDING SLEEVE 63T
PART NO: 1257 304 020

50



SYNCHRONIZER CONE 19/51T
PART NO : 1272 304 136

51



SYNCHRONIZER CONE 34T/51T
PART NO: 1285 333 021

52



SYNCHRONIZER CONE 30T/48T
PART NO: 1250 312 364

53



SYNCHRONIZER HUB 63T
PART NO: 1268 304 007/ 1268 304 150

54



SYNCHRONIZER HUB 4TH & 5TH SPEED
PART NO: 1292 304 041

55



SYNCHRONIZER CONE 25T/48T
PART NO: 1250 312 366

56



INPUT SHAFT (SP L=125MM)
PART NO: 1295 202 028/ 1297 202 053/
1295 202 011

57



INPUT SHAFT (SP L= 140MM)
PART NO: 1297 202 030

58



CONSTANT GEAR 28T
PART NO: 1295 302 071

59



SLIDING SLEEVE 57T
PART NO: 1295 304 002

60



SYNCHRONIZER CONE 58T/57T
PART NO: 1295 304 278

61



SLIDING SLEEVE 63T
PART NO: 1296 333 023

62



SYNCHRONIZER CONE 38T/63T
PART NO: 1313 233 001

63



GEAR 4TH SPEED 30T
PART NO: 1295 304 135

64



SYNCHRONIZER CONE 58T/63T
PART NO: 1297 304 196

65



SLIDING SLEEVE 57T (1ST & 2ND SPEED)
PART NO: 1257 304 020

66



SLIDING SLEEVE 57T (FORK DIA GRIND)
PART NO: 1310 304 202

67



SYNCHRONIZER CONE 57T/58
PART NO: 1297 304 369

68



GEAR 1ST SPEED 47T
PART NO : 1297 304 150

69



GEAR 2ND SPEED 38T
PART NO: 1295 304 121

70



GEAR 3RD SPEED 34T
PART NO: 1297 304 115

71



GEAR 3RD SPEED 34T
PART NO : 1295 304 128

72



SUN GEAR 27T
PART NO: 1295 304 248

73



GEAR 2ND SPEED 38T
O.E. Ref No. 1297 304 112

74



SYNCHRONIZER CONE 27T/51T
PART NO: 1310 302 045

75



GEAR 4TH SPEED 30T
PART NO: 1297 304 127

76



CONSTANT GEAR 28T
PART NO: 1297 302 176

77



GEAR 3RD SPEED 25T
PART NO: 1297 303 077

78



CONSTANT GEAR 32T
PART NO: 1297 303 098

79



SUN GEAR 27T
PART NO.: 1297 304 187

80



SLIDING SLEEVE 22T (1ST AND 2ND)
PART NO.: 1297 304 119

81



SLIDING SLEEVE 23T (3RD & 4TH)
PART NO : 1297 304 120

82



SYNCHRONIZER HUB 23T
PART NO : 1297 304 188

83



SYNCHRONIZER CONE 30T/57T
PART NO.: 1312 304 027

84



SYNCHRONIZER HUB 22T
PART NO. 1295 304 235

85



SYNCHRONIZER CONE 30T/57T
PART NO :0091 304 056

86



SYNCHRONIZER CONE 57T/58T
PART NO : 0091 304 311(ZF Brazil)

87



SYNCHRONIZER CONE 57T/58T
PART NO : 0091 304 310 (ZF Brazil)

88



SYNCHRONIZER CONE (36 SPL)
PART NO : 1295 233 025

89



SYNCHRONIZER RING (BIG)
PART NO : 1308 304 096

90



SYNCHRONIZER CONE (BIG)
PART NO : 1308 304 077

91



SYNCHRONIZER CONE (SMALL)
PART NO : 1308 304 078

92



SYNCHRONIZER HUB (SMALL)
PART NO : 1307 304 607

93



SYNCHRONIZER RING (BIG)
PART NO : 1308 304 091

94



SLIDING SLEEVE (SMALL)
PART NO : 1308 304 090

95



SYNCHRONIZER HUB (BIG)
PART NO : 1307 304 608

96



MAIN DRIVE SHAFT
PART NO: 1249 202 526
WEIGHT: 2.58 KG

97



GEAR 4TH SPEED
PART NO : 1249 204 533
WEIGHT: 0.8 KG

98



SLIDING SLEEVE
PART NO : 1249 304 321
WEIGHT: 0.397 KG

99



MAIN SHAFT
PART N: 1249 304 572
WEIGHT: 4.35 KG

100



MAIN DRIVE SHAFT
PART NO : 1269 202 538
WEIGHT: 2.274 KG

101



SYN HUB
PART NO: 1249 304 572
WEIGHT: 0.81 KG

102



4TH SPEED GEAR
PART NO: 1249 202 538
WEIGHT: 0.78 KG

103



SECONDARY GEAR
PART NO : 1249 303 539
WEIGHT: 1.41 KG

104



SECONDARY GEAR
PART NO : 1249 303 538
WEIGHT: 1.71 KG

105



DRIVE SHAFT
PART NO : 1249 202 049
WEIGHT: 2.53 KG

106



3RD SPEED GEAR
PART NO : 1249 204 057
WEIGHT: 1.07 KG

107



SECONDARY GEAR
PART NO : 1249 303 028
WEIGHT: 1.41 KG

108



SECONDARY GEAR
PART NO : 1249 303 024
WEIGHT: 1.41 KG

109



SECONDARY GEAR
PART NO : 1249 303 064
WEIGHT: 1.33 KG

110



REVERSE GEAR
PART NO : 314 260 0725
WEIGHT: 1.57 KG

111

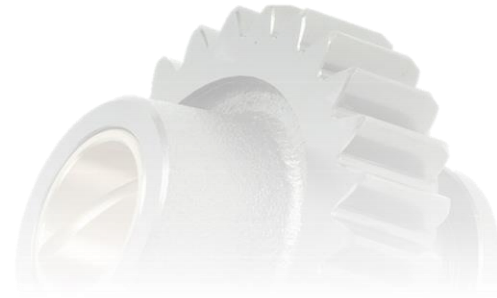


MAIN SHAFT
PART NO : 337 262 0505
222 262 0505
WEIGHT: 3.48 KG



BEE OVERSEAS

MOVE WITH PRIDE



ADDRESS:

116,NEO COROPORATE PLAZA,
KANCHPADA, MALAD WEST,
MUMBAI- 400094 ,
MAHARASHTRA, INDIA

CONTACT DETAILS:

Mobile no:  8080039208

9152130322



Website: www.beeoverseas.com



Email id: beeoverseas@yahoo.com
beeoverseas78@gmail.com